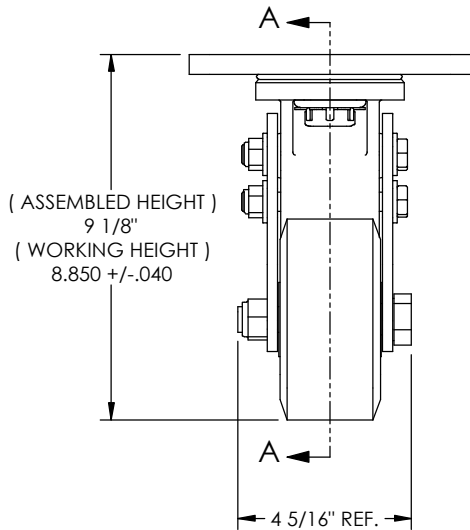
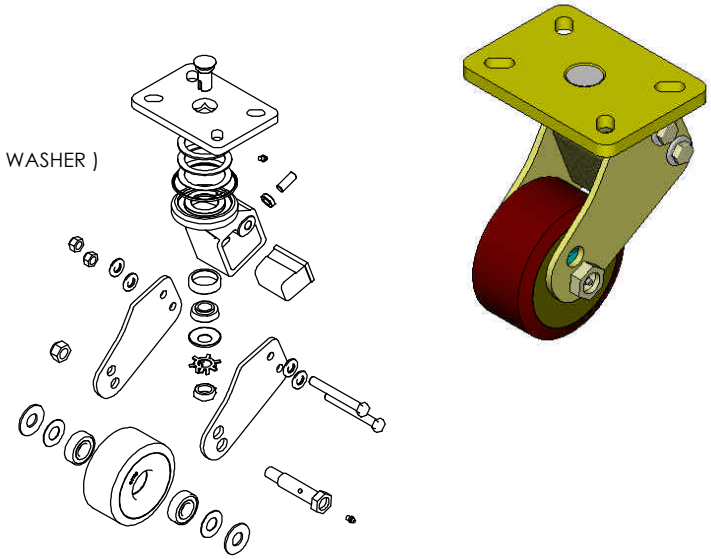
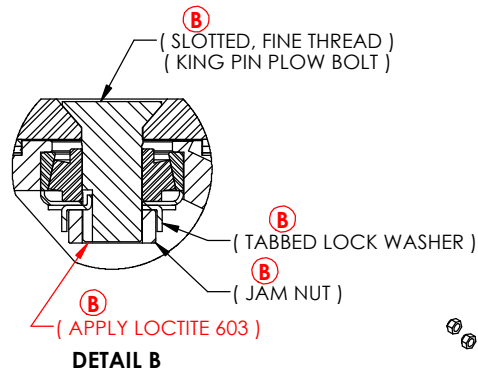
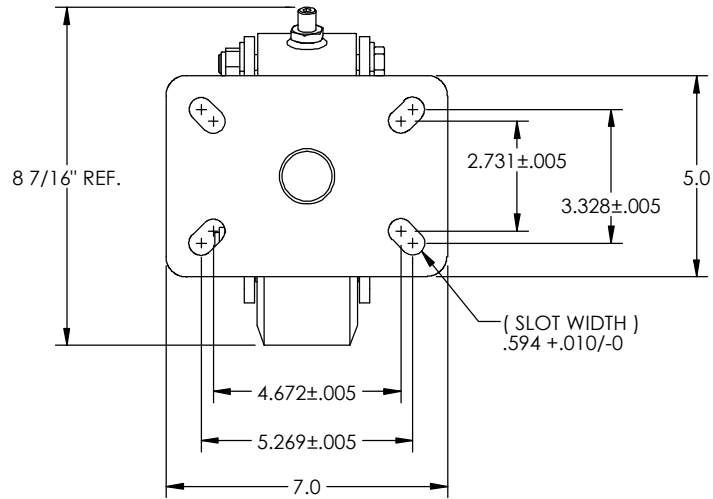
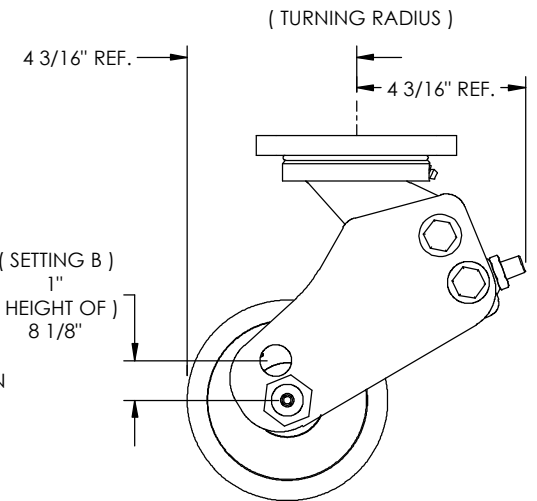
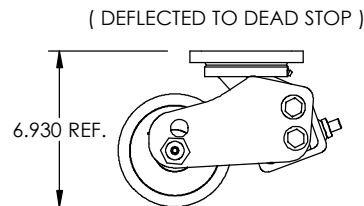
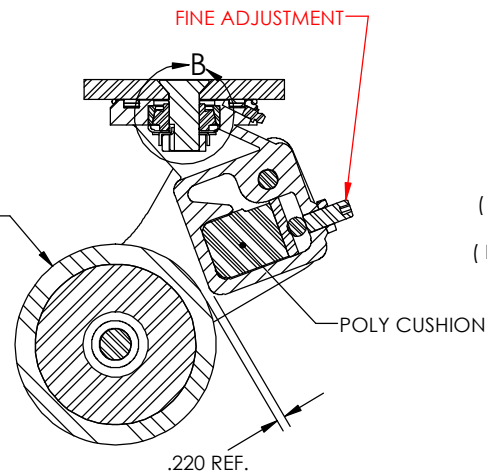


NOTE:

FINISHING DEPT. - PRIOR TO SHIPPING, ADJUST CASTER ASSY.
TO THE FINISHED HEIGHT OF 8.850 +/- .040



5" X 2 1/2" LOADWHEEL
(ITEM # S-9123)



CAL. WT. 23.9 LBS.

ITEM NO.	QTY.	FILE NUMBER & DESCRIPTION	Protective Coating
1	1	94807516175pbslt SLOTTED PLOW_BOLT	BLACK OXIDE
2	1	STR3000-2 MOUNT PLATE	YELLOW ZINC
3	B 1	94btwa3648 WASHER	
4	1	94b2250 OILITE_THRUST	
5	1	94btwc3648 WASHER	
6	1	STR2000-13 CAST HOUSING Rev D	YELLOW ZINC
7	2	94znissan ZERK	SILVER ZINC
8	1	94blm11910-tim CUP	
9	1	94blm11949 CONE	
10	1	94blm11910cap BEARING CAP	
11	1	94w00750tblw TABBED LOCK WASHER	
12	1	94n2075016jh JAM NUT	SILVER ZINC
13	1	94s2-237 O-RING	
14	1	STR2000-9 POLY CENTER	
15	2	94mb12175100-1 FULL SHOULDER	YELLOW ZINC
16	4	94w2026 1-2in WASHER	SILVER ZINC
17	2	94mn12175nLhn NYLOCK NUT	SILVER ZINC
18	1	S-9123_TIRE	
19	2	94b6204-2rs BEARING	
20	2	94mwstring STRING WASHER	
21	2	94mwstr2000-8 STRING GUARD	
22	1	94mb12125030-1 SET SCREW	BLACK OXIDE
23	1	94mn12125jhn JAM NUT	SILVER ZINC
24	1	STR6100-12 AXLE BOLT	YELLOW ZINC
25	1	94mn16200nLhn AXLE NUT	SILVER ZINC
26	1	STR3002-1L SIDEPLATE	YELLOW ZINC
27	1	STR3002-1R SIDEPLATE	YELLOW ZINC

